



Real time student feedback during lecture:

Musings on using “Top-Hat”
while teaching undergraduates

Bill Archer

June 20, 2017

What is “Top Hat”?

➤ What is “Top Hat”?

- Student participation
- Good questions
- Question timing
- Peer-to-peer learning
- Other uses

- Online tool for “clicker questions” via phone/tablet/computer
- This discussion not limited to specifically this software
- Top Hat subscription costs \$26 /term (\$75 for 4-years)
- Does your institution already use Top Hat? Equivalent?

Student participation

➤ What is “Top Hat”?

➤ **Student participation**

➤ Good questions

➤ Question timing

➤ Peer-to-peer learning

➤ Other uses

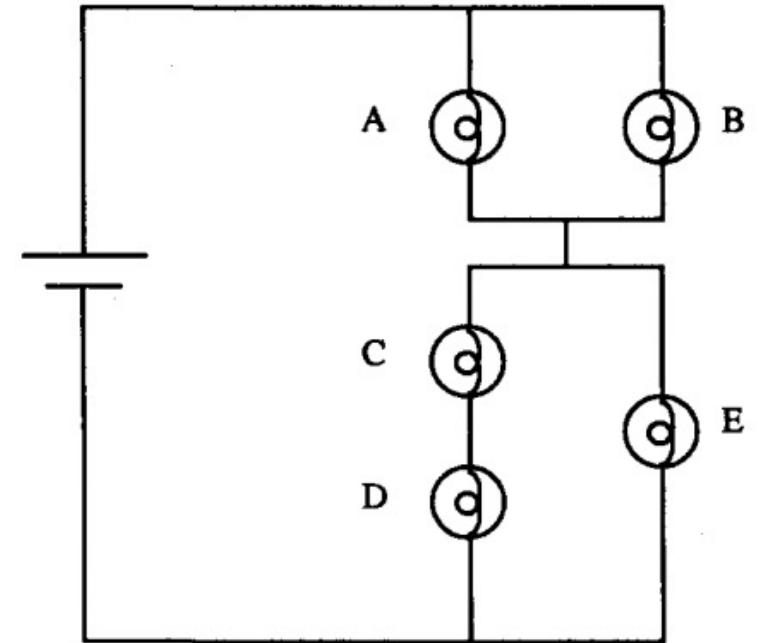
- Feedback only works if students participate
- Make it worth a small amount (2%) of their mark
 - 1% for participation, 1% for correct answers
 - Be generous (mark it out of 80 for each 100 questions asked)
- Does your University have loaner phones for this?
- Worst case scenario: have some students participate on paper

Good questions

- What is “Top Hat”?
- Student participation
- **Good questions**
- Question timing
- Peer-to-peer learning
- Other uses

- Avoid calculations
- Test concept comprehension
- Quick to answer
- Plan to review if they get it wrong

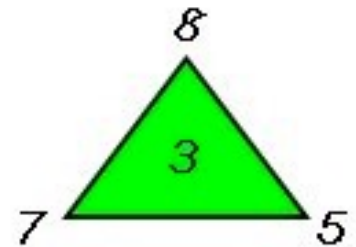
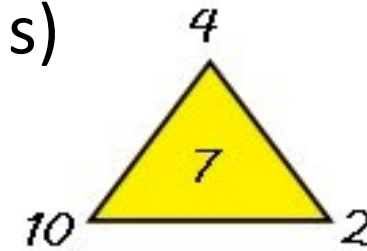
Rank the bulbs according to brightness:



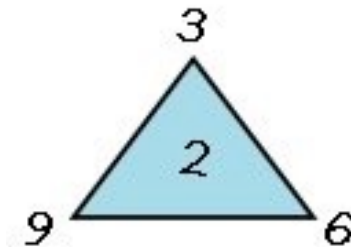
Question timing

- What is “Top Hat”?
- Student participation
- Good questions
- **Question timing**
- Peer-to-peer learning
- Other uses

- Give a set amount of time (60 – 90 s)



- Shorten that time as you go



- First question of the day is slow

- Bonus question prior to class will speed things up

Peer-to-peer learning

- What is “Top Hat”?
- Student participation
- Good questions
- Question timing
- **Peer-to-peer learning**
- Other uses

- If more than 75% get it correct, move on
 - “Ask your neighbours, have them explain their answer.”
- If less than 75% get it correct, give them 2 minutes
 - “Find someone who disagrees with you, convince them.”
- Ask the same question again
 - Less stress about getting the correct answer
 - More likely to work independently at first

Other uses

- What is “Top Hat”?
- Student participation
- Good questions
- Question timing
- Peer-to-peer learning
- **Other uses**

- Work through solutions:
- Test a concept interactively:
- Student led derivations

Which question would you like
me to review next?
Is there a net force acting
on Brian Boitano?

Where should you push?

Does pushing harder help?

a) Question 1
What direction should you push?



Overview

- Are your students already using Top Hat or equivalent?
- Great tool for keeping track of student understanding.
- Biggest challenge is maintaining lecture pace.
- Promotes participation in class and peer-to-peer instruction.
- Many additional uses.