

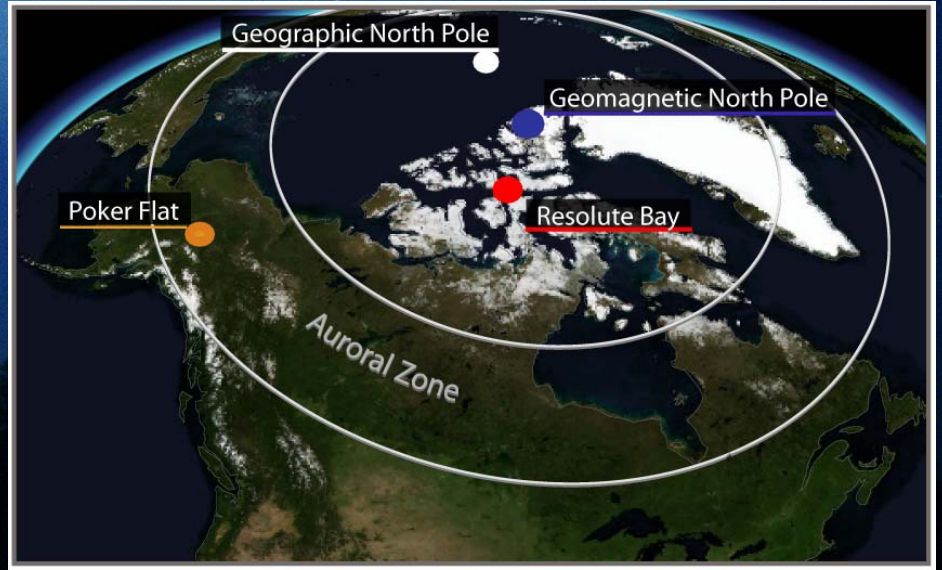


Canada Foundation  
for Innovation  
Fondation canadienne  
pour l'innovation



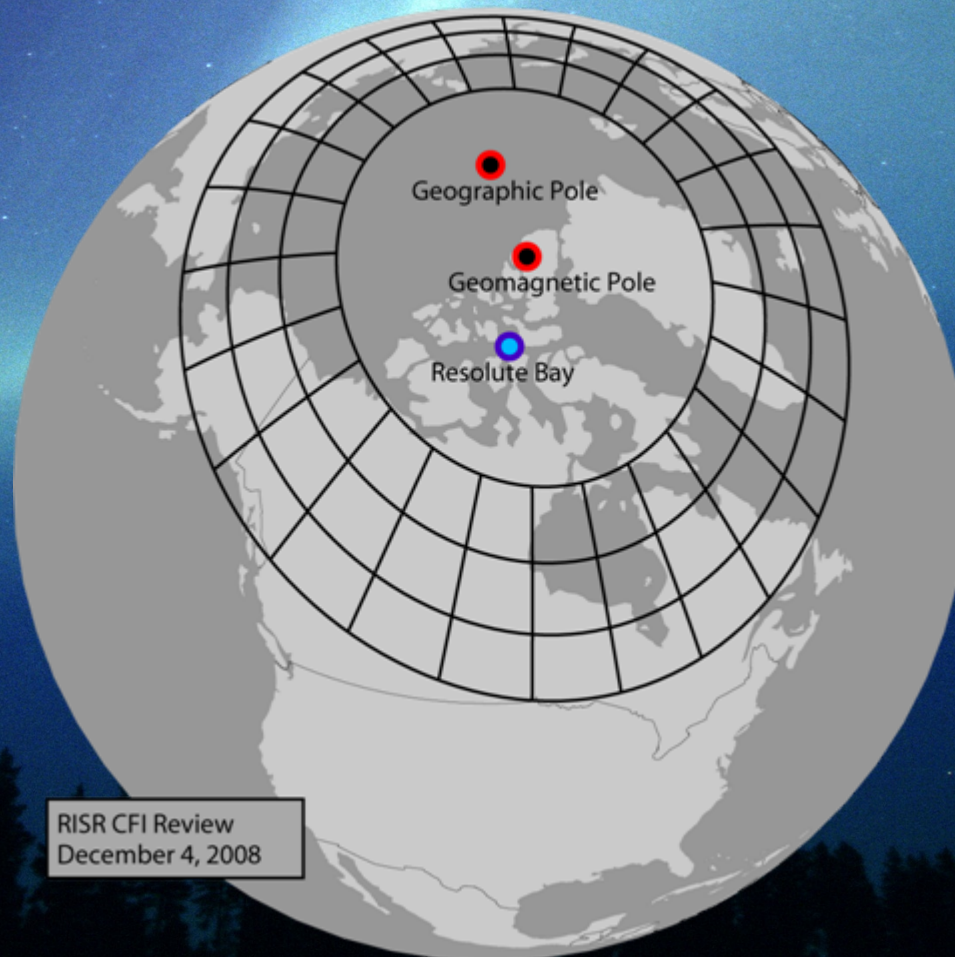
# RISR

## Resolute Incoherent Scatter Radar



# RISR-C

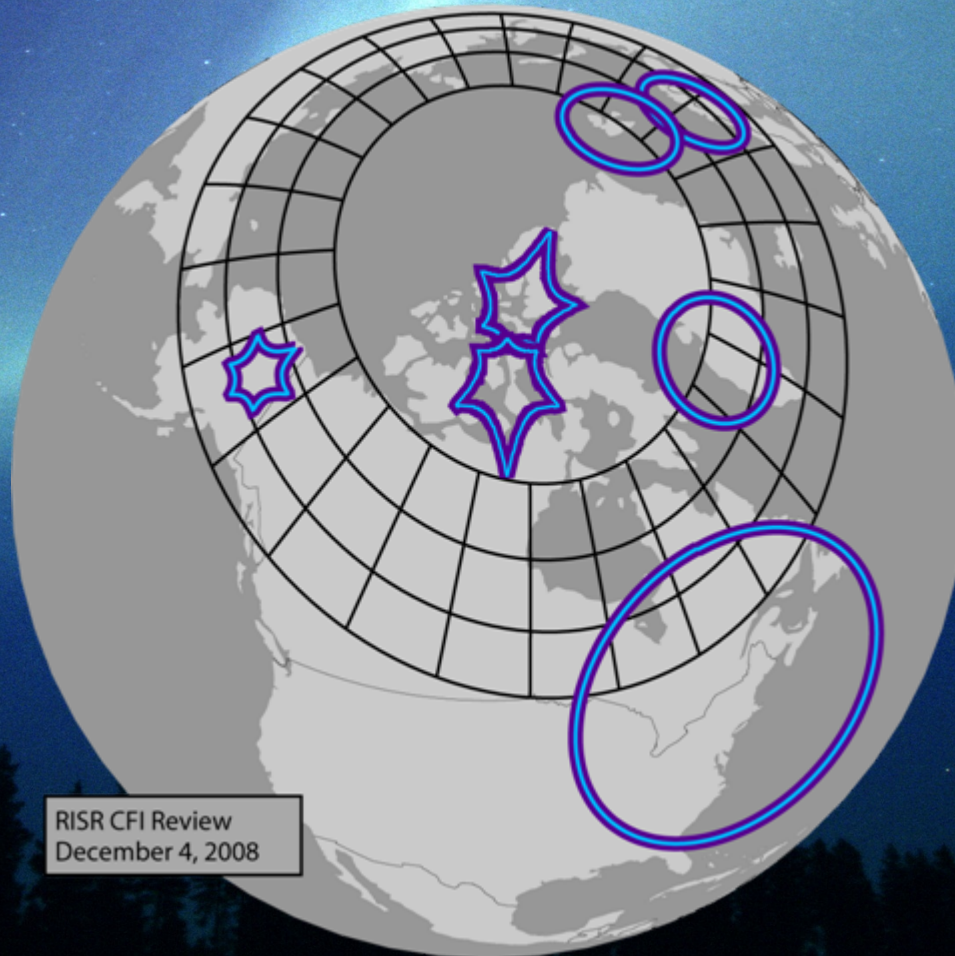
Why Resolute Bay?



RISR CFI Review  
December 4, 2008

# RISR-C

## The Opportunity



RISR CFI Review  
December 4, 2008

# RISR-C

## The Opportunity



## The Team (for the purposes of the proposal)

### 1) Implementation & Operation (10)

University of Calgary  
University of Saskatchewan  
Athabasca University  
SRI International

### 2) Science Core (34)

Athabasca University	Boston University
University of Calgary	MIT Haystack Observatory
University of New Brunswick	NASA Goddard
University of Saskatchewan	NCAR HAO
York University	SRI International
University of Leicester	UCLA
Rutherford Appleton Labs	Sodankylä Geophysical Observatory

### 3) User Community (>200 worldwide)

... including every Canadian institution that studies space

## Research Themes



Fundamental  
Research

What is the origin of structure in cosmic plasmas?

SOC in the geospace environment

Geospace  
Exploration &  
Discovery

What causes substorm onset?

What is the origin of magnetospheric plasma?

How does space weather affect climate?

Engineering

How does space weather affect GNSS?

Technology pathfinder

SKA

CEFI

## Return on Investment

“CFI allows researchers to compete with the best from around the world, and helps to position Canada in the global, knowledge-based economy. CFI support is intended to:

- strengthen Canada's capacity for innovation
- attract/retain highly skilled research personnel in Canada
- stimulate the training of HQP through research
- promote networking, collaboration, and multidisciplinary among researchers, institutions, and sectors
- ensure optimal use of research infrastructure within and among Canadian institutions.

The research enabled by CFI support is also creating the necessary conditions for sustainable, long-term economic growth, including the creation of spin-off ventures and the commercialization of discoveries, and supporting improvements to society, quality of life, health, the environment, and public policy.”

## Return on Investment

“CFI allows researchers to compete with the best from around the world, and helps to position Canada in the global, knowledge-based economy. CFI support is intended to:

- strengthen Canada's capacity for innovation
- attract/retain highly skilled research personnel in Canada
- stimulate the training of HQP through research
- promote networking, collaboration, and multidisciplinary among researchers, institutions, and sectors
- ensure optimal use of research infrastructure within and among Canadian institutions. “

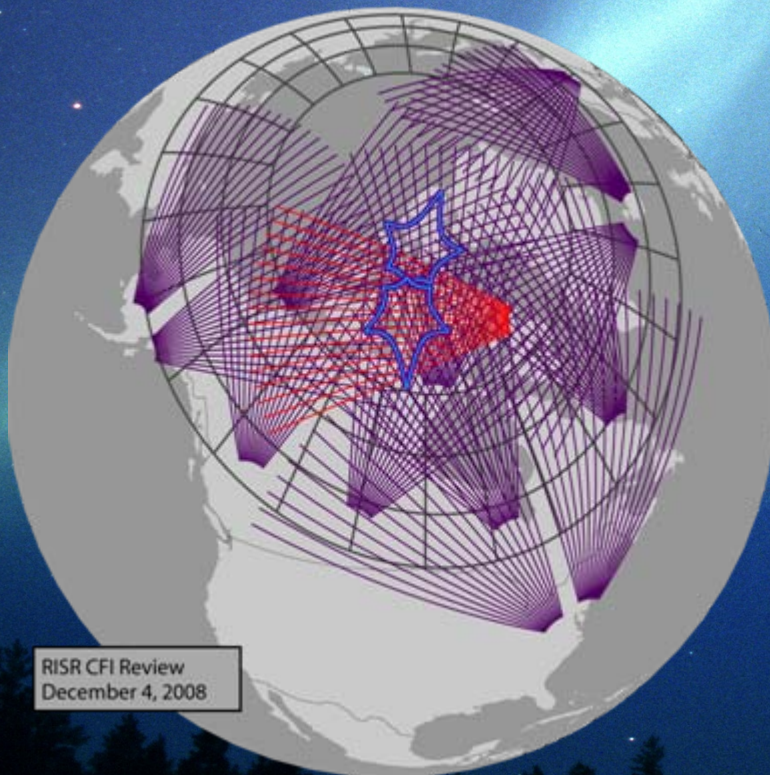
Outcome.... >\$2,000M “ask”  
~\$660,000,000 awarded .... including....

Cell and Tissue Innovation Research Centre (CTIRC)	\$10,573,340
Advanced Structural Biology for Re-emerging Infectious Diseases	\$4,097,211
Center for High Through-Put Phenogenomics	\$3,770,352
Canadian Accelerator Mass Spectrometry (AMS) Facility	\$8,409,245
The Resolute Bay Incoherent Scatter Radar: A Space Science Initiative in Nunavut	\$9,737,353

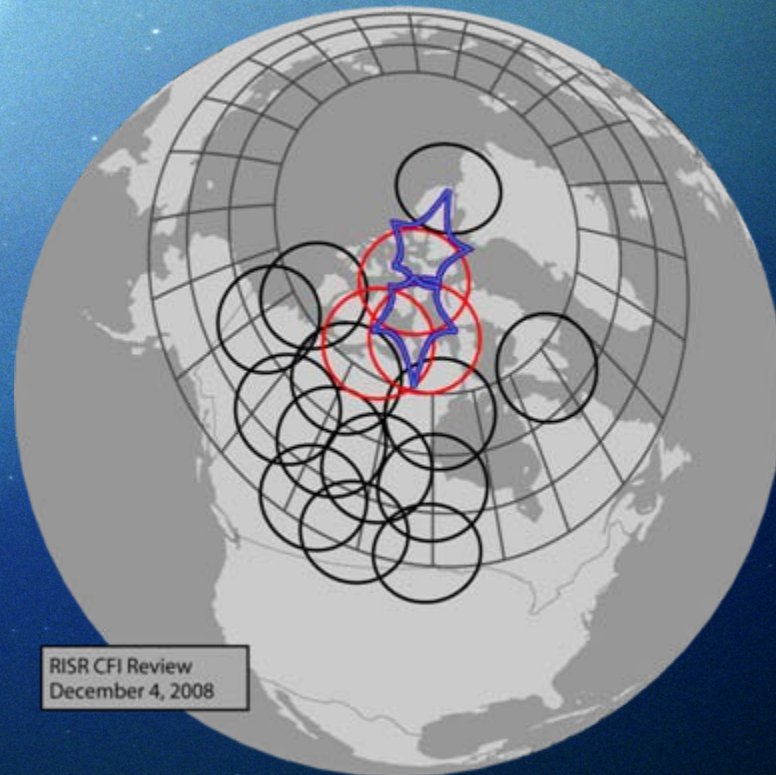


# RISR-C

## Ancillary Instruments



RISR CFI Review  
December 4, 2008



RISR CFI Review  
December 4, 2008

# RISR

Resolute Incoherent Scatter Radar

